



GAT MONTHLY MEMBERSHIP PROGRESS REPORT

Results as of: 6/30/2021

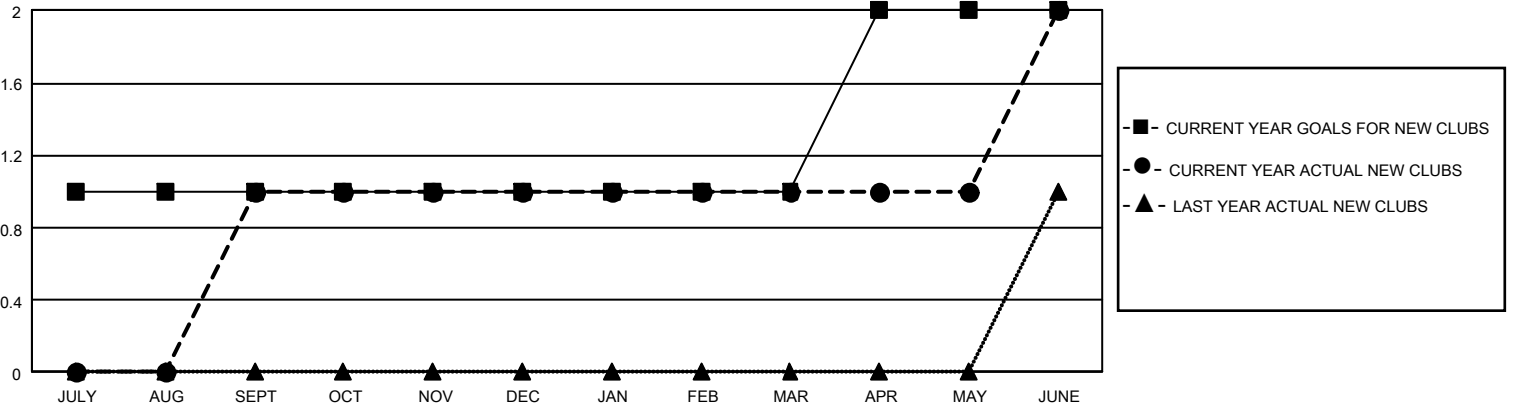
GAT Constitutional Area 5 - China

REPORT DOES NOT INCLUDE CLUBS IN UNDISTRICTED AREAS.

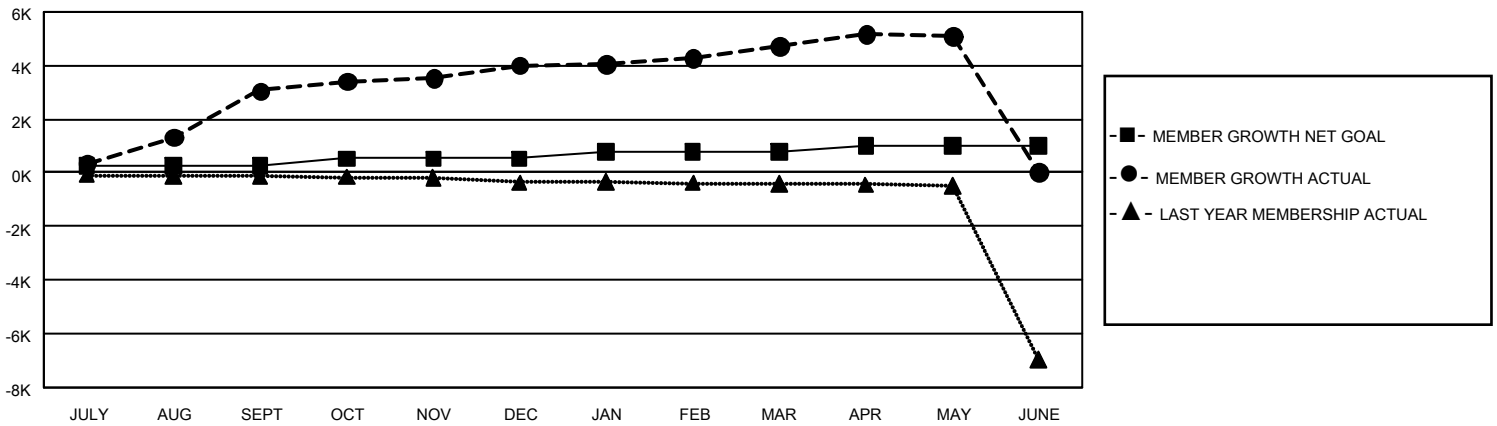
Clubs			
RESULTS FOR 2020-2021			
QUARTER	NEW CLUB GOAL	NEW CLUBS	DROPPED CLUBS
JULY/AUG/SEPT	3	1	4
OCT/NOV/DEC	0	0	0
JAN/FEB/MAR	0	0	5
APR/MAY/JUNE	3	1	1

Members			
RESULTS FOR 2020-2021			
QUARTER	MEMBER GROWTH NET GOAL	MEMBER GROWTH ACTUAL	DROPPED MEMBERS ACTUAL (including transfers)
JULY/AUG/SEPT	273	4,039	583
OCT/NOV/DEC	253	1,517	336
JAN/FEB/MAR	263	996	217
APR/MAY/JUNE	223	1,361	5,573

GOALS AND ACTUAL NEW CLUBS CUMULATIVE



GOALS AND ACTUAL MEMBERS CUMULATIVE



DROPPED CLUBS: 10	1,146 CLUBS OF 1,362 ADDED 1 OR MORE NEW MEMBERS	<u>GENDER DISTRIBUTION</u>	
<u>DROPPED MEMBERS</u>		MALE	19,803 (62.60%)
DECEASED	34	FEMALE	11,830 (37.40%)
CLUB CANCELLED	42	TOTAL FAMILY UNIT MEMBERS 2,043	
OTHER	6,633	FAMILY MEMBERS PAYING HALF DUES 1,049	
TOTAL	6,709		

[CLICK HERE FOR CUMULATIVE MEMBERSHIP DATA](#)